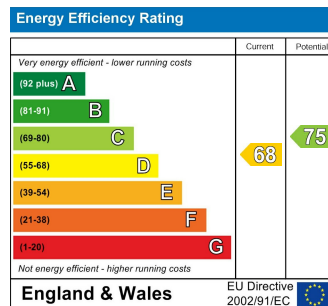
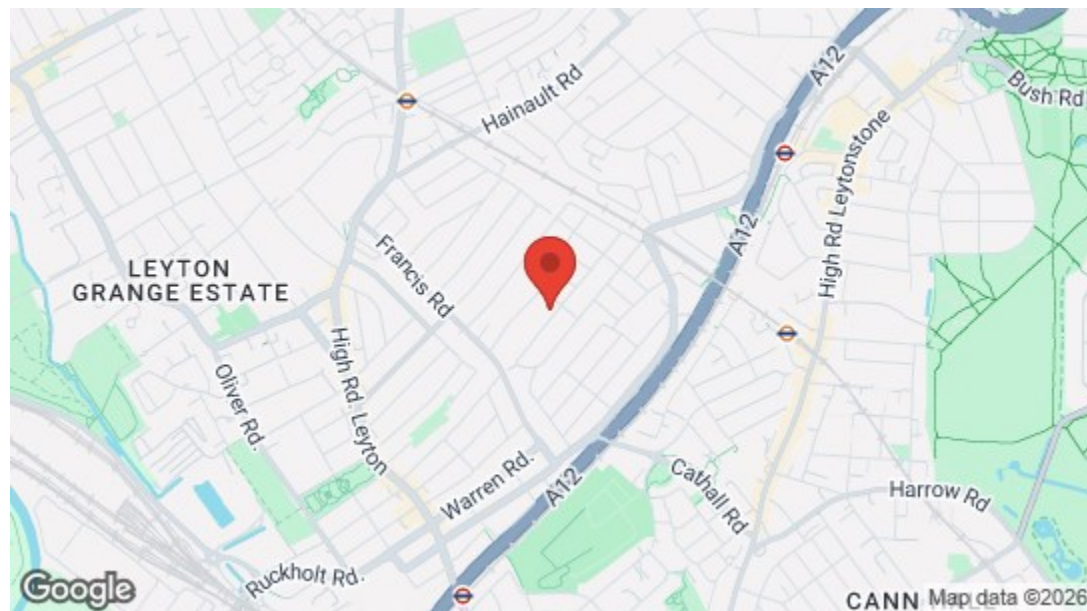


THE STOW BROTHERS

EST 2014

SALES/LETTINGS/NEW HOMES/MANAGEMENT

Twickenham Road, London
£2,400 Per Calendar Month
3 Bed Flat



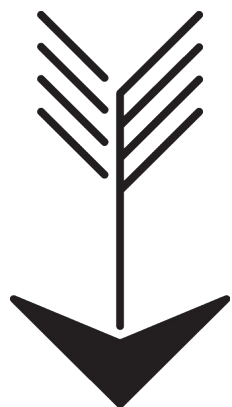
S/B

→ E17 Office
 236 Hoe Street
 E17 3AY
 0203 397 9797
 hello17@stowbrothers.com

→ E11 Office
 117a High Street
 E11 2RL
 0203 397 2222
 hello11@stowbrothers.com

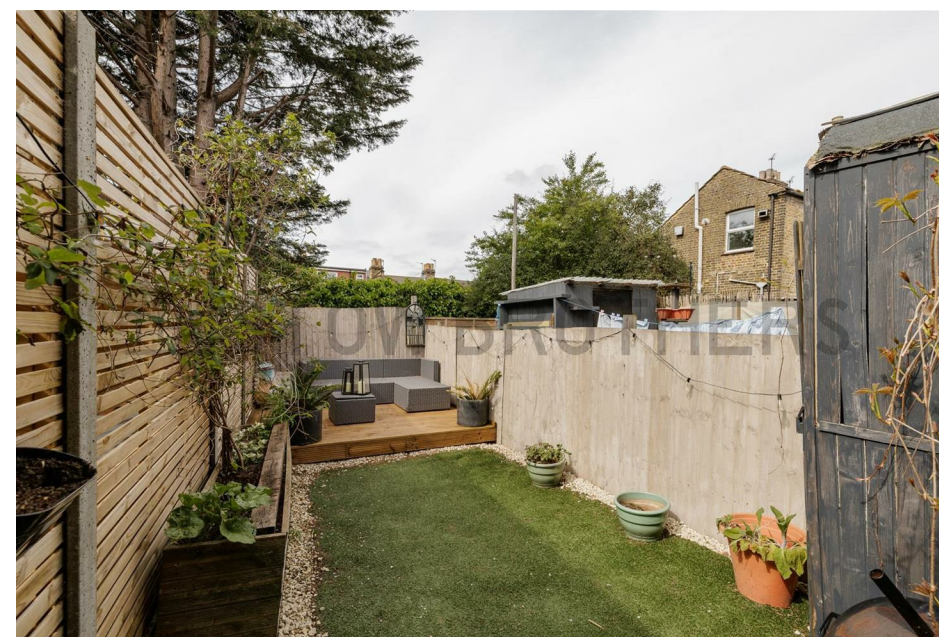
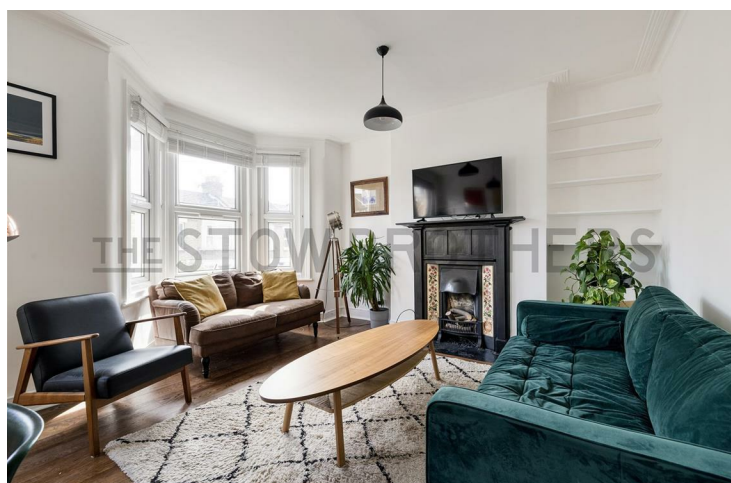
→ E4 Office
 1 Bank Buildings,
 The Avenue, E4 9LE
 0203 369 6444
 hello4@stowbrothers.com

stowbrothers.com
 @stowbrothers



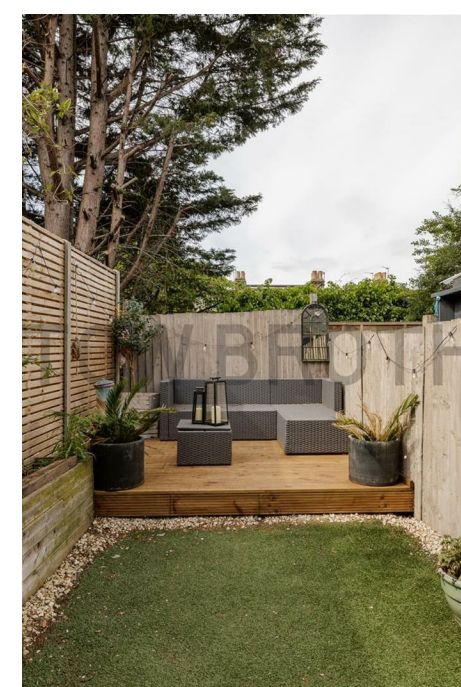
Features

- Split Level Flat
- Three Double Bedrooms
- Two Bathrooms
- Separate Kitchen
- Tastefully Renovated
- Private Garden
- Short Walking Distance to Station
- Off Francis Road
- Parking Permit Only
- Holding Deposit: equivalent to one week's rent capped at £400



Artfully extended across two floors, this bright and spacious three-bedroom apartment boasts a bright reception room, dine-in kitchen, two bathrooms, private rear garden, utility, immaculate decor, and fantastic E11 location, amongst other highlights.

As for local amenities, you're nestled between the lively action of Francis Road and Leytonstone, so you'll be spoilt for choice when it comes to food and drink-based perks. What's more, Leytonstone station is around 13 minutes away on foot, so you can easily nip into central London.



WHAT ELSE?

- Leytonstone tube station is around 13 minutes on foot to get you into central London via the Central Line. Or hop on to the Suffragette Overground at Leytonstone High Road for the Gospel Oak to Barking line, a short walk away.
- There's plenty of greenery too... To the south, Bushwood is renowned for its wide tree-lined streets of grand Victorian and Edwardian homes, leading the way to the Wanstead Flats. You've also got Hollow Ponds nearby, at the tip of Epping Forest.
- Head south-west (or hop on the bus if you're in a hurry) and you'll find yourself in the iconic Olympic Park, and just beyond that, Westfield Stratford. Nearby there's also East Bank, a unique collaboration between world-leading universities, arts and culture institutions, including Sadler's Wells, UAL and V&A.







➤➤ IF YOU LIVED HERE...

With the perfect balance of period charm and contemporary convenience, this apartment has been lovingly updated with a loft conversion, making it even more of a special find for the area.

Coming in at almost 1000 square foot, you'll have plenty of space to spread out inside, while the smart layout means you can keep different aspects of your lifestyle separate. The neutral decor and contemporary fittings blend seamlessly with vintage features like the feature fireplace in the spacious reception. This room is bursting with light thanks to the generous windows, while the two first floor bedrooms are bright and spotless too.

In the sizeable kitchen, you'll find smart cabinets, timber worktops, metro brick tiling and beautiful painted wood flooring, and there's space for a table too. The first floor bathroom is just as gorgeous, with striking tiling and smart features such as the over-tub shower and washstand basin.

The second floor is the ideal retreat, with its immaculate decor, sweeping views and considered fittings. As well as the eaves storage, you'll find a fantastic ensuite shower room.

At the rear you have a private garden, which is wonderfully spacious with a low maintenance lawn, contemporary fencing and sun-trap decked patio.

Just a few minutes from your front door, you'll come across the part-pedestrianised Francis Road, which is now recognised across the capital as a hub thanks to its eclectic mix of eateries and stores, ranging from upmarket deli Yardarm to independent book shop Phlox.

As close to home, you've got some great bars around the Grove Green Road, including the Filly Brook, Heathcote & Star and the Northcote Arms. Head north towards Leytonstone High Road for even more great options like FORNO, Homies on Donkeys, Mum Likes Thai Food, and Panda dim sum. You really are in the heart of the action here.

